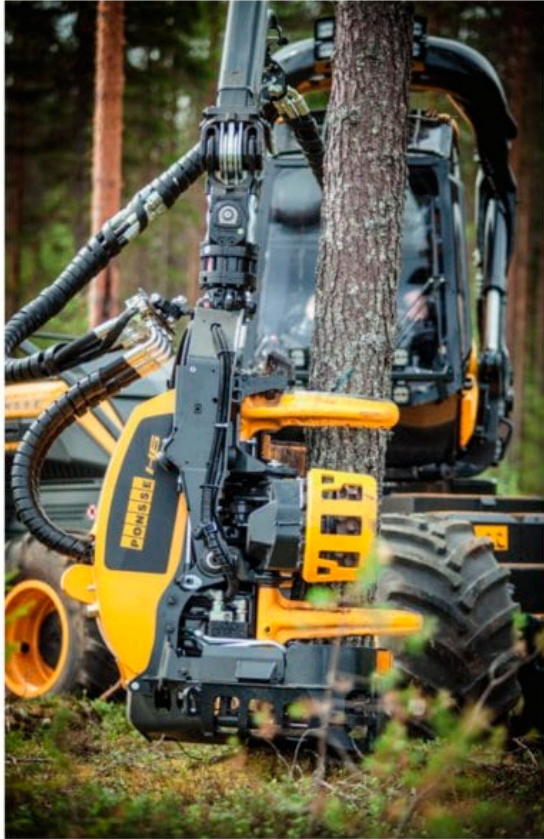


PONSSE H6



QUALITIES THAT GUARANTEE POWER

- Nimble general harvester head, wide operating range
- Excellent geometry
- Quick and powerful feed
- Efficient, economical sawing
- Versatile controls
- Maintenance-friendly structure
- Suitable for multi-stemming

EFFICIENT GENERAL HARVESTER HEAD

The PONSSE H6 harvester head is highly versatile, and its use ranges from thinning sites with small trees to regeneration felling. The large opening and precise controls make working easy. Thanks to wide tilt movements combined with quick and powerful feed and cutting, the PONSSE H6 is a highly reliable harvester head for all types of sites. The short and durable structure, large feed rollers and excellent delimiting capacity of the PONSSE H6 harvester head, as well as the low grip friction of the knives, are features that guarantee high productivity in difficult conditions as well.

The PONSSE H6 harvester head is also excellent for multi-stemming, where the operation is based on the controls of feed rollers and standard delimiting knives. When the machine grabs a new trunk, the feed rollers hold the trunk in place in the harvester head while the knives grab a new tree. Multi-stemming considerably speeds up harvesting and improves the result on sites with small trees. The multi-stemming function does not weaken the harvester head's features when handling single trunks.

MEASUREMENTS

Weight:	from 1 050 kg (2,315 lbs) excl. rotator
Length:	1 445 mm (57 in)
Height without rotator:	1 530 mm (60 in)
Width:	1 500 mm (59 in)
Power consumption:	100-120 kW
Operating pressure:	28 MPa (4,060 psi)

FEEDING UNIT

Feed system:	3 rollers
Largest opening (feed rollers):	600 mm (23.6 in)
Feed power:	25 kN (5,620 lbs)
Feed speed:	6 m/s (19.7 ft/s)

DELIMITING UNIT

Number of knives	4+1+1
Maximum opening of front knives	640 mm (25.2 in)
Maximum opening of rear knives	650 mm (25.6 in)
Delimiting knives and feed rollers are separately controlled.	

SAW UNIT

Hydraulic chainsaw	
Saw bar length	750 mm (30 in)
Cutting diameter	640 mm (25.2 in)
Chain speed	40 m/s (131 ft/s)
Chain	0,404*

* Available optional saw box lights and saw chain grease lubrication.

OPTIONAL EQUIPMENT

Plenty of optional equipment is available in addition to the comprehensive PONSSE H6 standard equipment. Consult your nearest Ponsse Service Center or dealer for more information on the standard and optional equipment.

The manufacturer reserves the right to make technical changes and improvements.



Ponsse Plc
Ponssentie 22
FI-74200 Vieremä
FINLAND
Tel. +358 20 768 800

Ponsse UK Ltd.
4 Annan Business Park
Annan
Dumfriesshire
DG12 6TZ
UNITED KINGDOM
Tel. +44 1461 207 510
Fax +44 1461 207 511

Ponsse North America, Inc.
4400 International Lane
RHINELANDER, WI 54501
USA
Tel. +1 715 369 4833

A logger's best friend

www.ponsse.com